

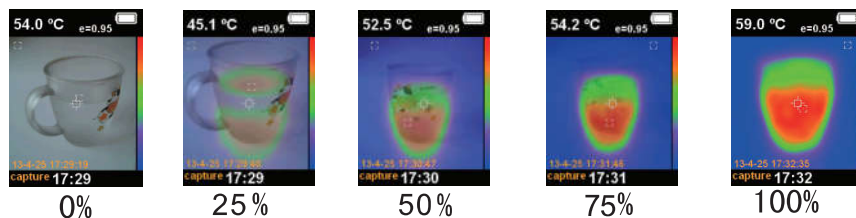
IR-890 Visual Infrared Thermometer



Image Blending

Image blending makes it easier to understand infrared heat maps through the use of an aligned visible image and infrared heat map. The product captures a visible image with each infrared heat map to exactly show the target area and more effectively share it with others.

To use the blending function, press UP/DOWN button to adjust the blending from 0% to 100%. The blend options are shown in below figure.



FEATURES

- ▶ 2.5" color LCD display
- ▶ Adjustable emissivity from 0.1 to 1.0
- ▶ Selectable color palettes
- ▶ Visual/heat map image alignment
- ▶ LED light allows the unit to be used in poor light
- ▶ Image capture and storage
- ▶ Units /Date/Time Set
- ▶ Auto Power Off



Specifications

Model	IR-890
Display	2.5" color LCD display
IR Resolution	60*60(3600 pixels)
Visible Light Image Resolution	300,000 pixels
Field of View(FOV)	20*20
Best Focus Distance	0.5m
Thermal Sensitivity	0.15°C
Emissivity	Adjustable from 0.1 to 1.0
Temperature Range	-20°C~300°C (-4°F~572°F)
Accuracy	±2% or ±2.0°C/3.6°F
Spectral Range	8~14um
Image Frequency	6Hz
Focus Mode	Fixed
Color Palette	Iron color, rainbow, black and white
Image Storage	SD Card(TF Micor)
File Format	bmp
Battery Type	4*1.5V "AA" size Lithium battery
Battery Life	6 hours
Auto Power Off	12 hours
Working Conditions	-5°C to 40°C/23°F to 104°F; 10%RH to 80%RH
Storage Conditions	-20°C to 50°C/-4°F to 122°F; 10%RH to 80%RH